

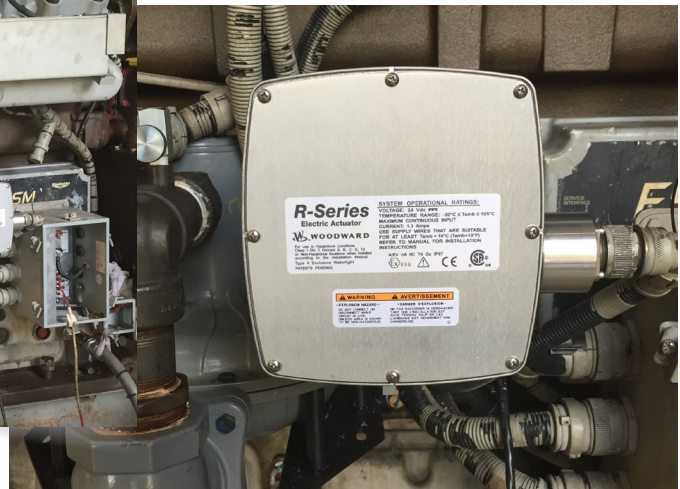
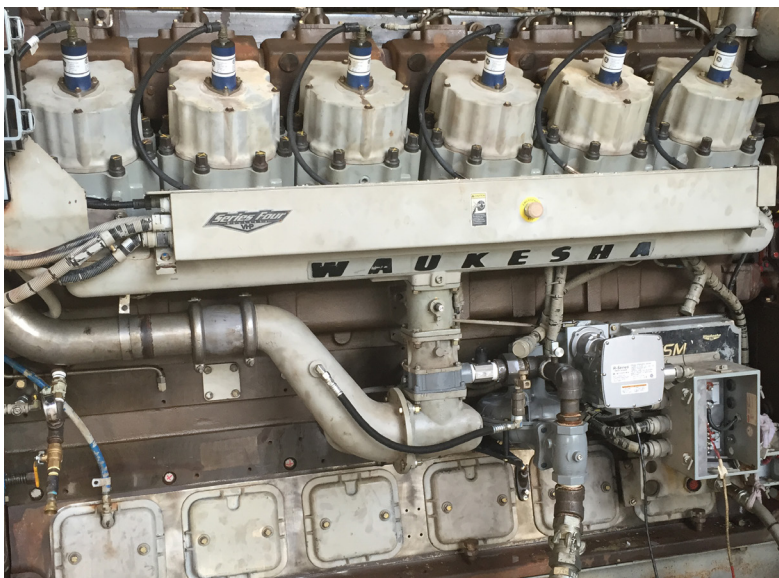


Actuator Kit for Waukesha ESM Extender Engines

Precision Control in Harsh Environments

If water, heat or other severe conditions are damaging the actuators on your Waukesha ESM Extender Engines, the Woodward R-Series Electric Actuator is the solution. The rugged Woodward R-11 Actuator is resistant to water and extreme environments. Using the GCS Actuator Replacement Kit, it is an easy-to-install direct replacement for the Heinzmann actuator.

GCS Actuator Replacement Kit for Waukesha ESM Extender Engines



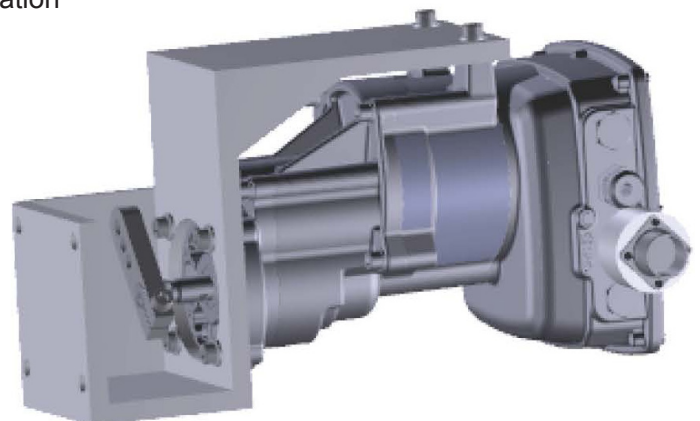
GCS Actuator Replacement Kit Part Number 1005-0026

- Woodward R-11 Actuator
- Mounting Bracket Assembly for Easy Drop-in Installation
- Lever for connecting to existing linkage
- Cables and connectors

Easy Drop-in Installation

Plug & Play Connection

No ESM software adjustment or harness modification needed



Governor Control Systems, Inc.

Southeast: 877-659-6328

Mid-Atlantic: 877-659-6328

Gulf Coast: 888-427-4853

Pacific Northwest: 206-297-0300

www.govconsys.com



Actuator Kit for Waukesha ESM Extender Engines

Before



After



R-Series Electric Actuator

- Scalable configuration gearbox/motor/software
- Small, lightweight package
- Meets IP67 dust and water immersion
- High output torque, low current electric actuator
- Engine mountable
- Fast response
- Tolerant of high vibration
- High temperature (–40 °C to +105 °C)
- All electric – easy to install
- Certified for hazardous location
- CSA Class I, Div II



For information about the GCS Actuator Replacement Kit for your Waukesha engines, contact GCS at sales@govconsys.com or visit www.govconsys.com.

PB_00016RevA



Southeast / Bahamas
Phone: 954-462-7404
Toll Free: 877-659-6328

Mid-Atlantic
Phone: 757-852-5808
Toll Free: 877-659-6328

Gulf Coast
Phone: 985-626-8707
Toll Free: 888-427-4853

Pacific Northwest
Phone: 206-297-0300