

Introducing TDI *TURBOTWIN™* T25

A Compact, Robust Air Starter for Engines from 6-12 Liters



Lots of Power in a Small Footprint

At just 121mm (4.75") diameter and less than 275mm (11") long, T25 delivers 21kW, (27hp) @ 6.2 BAR (90psig) on a 12 nozzle package. T25 redefines robust starting and reliability for small space applications.

No More Vane Motor Problems

The superior reliability of turbine technology over vane motors has been proven over the last 30 years. T25 eliminates the sticking, swelling, rubbing, and clogged motor problems inherent to vane-type starters. Its rugged steel construction and no plastic parts make it the most reliable small starter on the water.

Ideal for Small Marine Engine Applications.

T25 has already made a name for itself as an excellent fit for marine applications on a variety of engines around the world. T25 enables vessels with 6-12 Liter engines to take advantage of TDI's TurboTwin technology.

Integrated Controls Make Converting to TurboTwin Technology Easy.

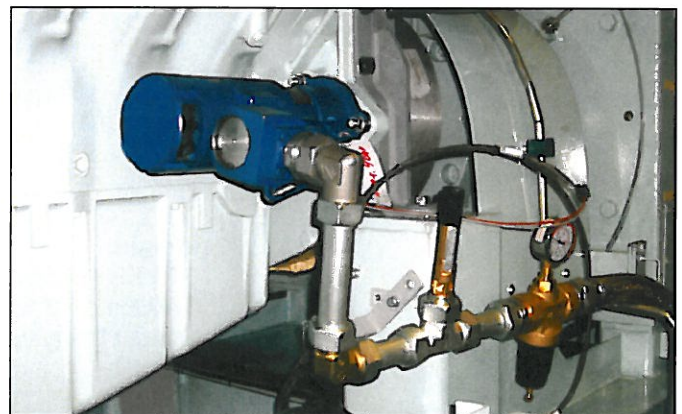
The design of the T25 even eliminates any potential control or wiring issues at installation by including an integrated control package with the unit. T25 maintains a small footprint and is remarkably easy to install

1 Hose, 2 Wires, 3 Bolts and T25 is Installed!

Users have been amazed at how easy it is to upgrade to TurboTwin. Installation is literally, attaching one hose, connecting two wires, and screwing in three bolts.

TurboTwin Field-Proven Reliability

The TurboTwin brand has the distinction of having the most turbine air starters in the field, and the most turbine air starters operating in the world's harshest and most demanding environments. There is a reason TurboTwin is the number one choice of system integrators, packagers, and aftermarket end users – "unparalleled starting reliability."

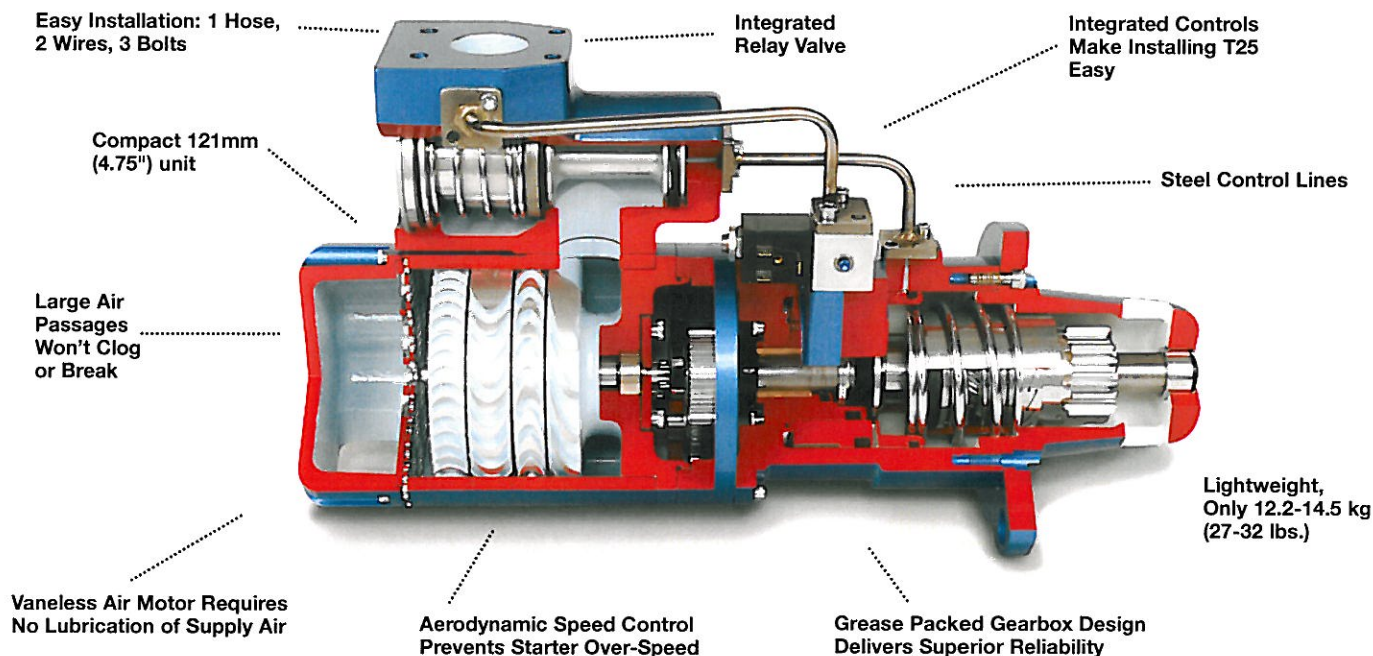


T25 installed on a MAN D2842.



ANYTHING LESS THAN A
TURBOTWIN™ IS A COMPROMISE.

Easy-to-Install, Compact Air Starting with Integrated Control Package



T25 SPECIFICATIONS

Engines: 6-12 Liter Displacement
 MAN 2842, 2866
 Scania D12 & D16
 Volvo D16
 MTU BR1600

Design Configuration:
 Pre-engaged; Outboard supported
 Nose Cone

Pinions:
 MTU 8/10 PD /12T (Special)
 Std. 8/10 Pd / 12T
 3MOD: 9T
 3MOD: 11T

Mounting:
 SAE #2 & 3
 SAE #1 (Available Soon)

Rotation:
 RH & LH

Power:
 17HP @ 4Bar (60 Psig) @2,200 rpm
 (12 Nozzle)
 17HP @ 8Bar (120 Psig) @2,200 rpm
 (6 Nozzle)

Weight:
 32.1 lbs (14.5 kg)
 27.0 lbs (12.2 kg)
 without Relay valve

Max. Operating Pressure Range:

Nozzles	BAR	PSIG
3 Nozzle	10.3	150
6 Nozzle	8.3	120
12 Nozzle	4.1	60

Supply Gas:
 AIR ONLY

Lubrication:
 Greased Packed for Life

Gear Ratio:
 10.25:1

Governor Control Systems Inc.
www.govconsys.com
 (877) 659-6328



ANYTHING LESS THAN A
 TURBOTWIN IS A COMPROMISE.

Tech Development
 6800 Poe Ave
 P.O. Box 13557
 Dayton, OH 45413-0557